

**Critical Analysis of Project Management Strategies  
for Large-Scale Events: A Case Study of the  
Reading Festival**

## Table of Contents

1. Introduction.....	3
2. Critical Analysis of Approach to Project Management.....	3
2.1 Project Management Practices .....	3
2.1.1 Logistics Management .....	4
2.1.2 Stakeholder Engagement .....	4
2.1.3 Risk Management .....	5
2.2 Success Factors .....	6
2.2.1 Comprehensive Planning .....	6
2.2.2 Stakeholder Collaboration .....	6
2.2.3 Adaptability.....	7
2.3 Challenges and Risks .....	7
2.3.1 Environmental Impact.....	7
2.3.2 Safety Concerns .....	7
2.3.3 Logistical Complexities .....	7
2.4 Project Management Methodologies .....	8
2.4.1 PRINCE2 .....	8
2.4.2 Agile Methodologies.....	8
3. Stakeholder Analysis.....	8
3.1 Power-Interest Matrix .....	9
4. Risk Management .....	11
4.1 Risk Register.....	11
4.2 Project Planning Roadmap.....	12
5. Conclusion .....	12
6. Recommendations.....	13

6.1 Sustainability and Environmental Practices.....	13
6.2 Improvements in Safety measures. ....	13
6.3 Stakeholder Communication.....	14
6.4 Technology Integration .....	14
7. References.....	15

## 1. Introduction

The Reading festival is among the well-known music festivals which is attended by more than 90000 people each year and is a festival held by festival Republic in the UK. It is a big and complicated project, in which there are huge involvement of Logistics, stakeholder association, risk package and implementation. The project life cycle in the festival will be highly controlled that will entail planning, implementation, monitoring and control as well as closure with the vision of providing a safe, progressive and memorable experience to all the stakeholders.

This report is a critical analysis of project management strategy which was embraced by the Reading Festival. The areas of interest are the core areas like logistics cooperation, stakeholder relations, process of risk identification and reduction, and application of the approach to project management like PRINCE2 and Agile approach. The report then goes ahead to carry out a stakeholder analysis, risk accumulation that is relevant to the large-scale provision of the festival and recommendations and findings in the conclusion chapter that will in turn serve the long-run performance and sustainability. The undertaking of project success factors and challenge analysis that the paper conducts enable the insight into best practices in the sphere of event management and the most relevant project management challenges of high-impact cultural events.

The report form will include the description of common project management lifecycle which encompasses initiation-to-closure with integration of theoretic basis and its practice which can be applied to large events. Through this it will conduct research on the need to have structured planning structures, risk management, as well as the cooperation of stakeholders that will trigger a, viable presentation of the project and areas that need improvement in the future.

## 2. Critical Analysis of Approach to Project Management

Practices in project management have evolved into a science, with the project managerial skills demanding specific proficiency.

### 2.1 Project Management Practices

The Reading Festival is a large-scale music festival that requires intensive project management practices. They include logistics management, stakeholder engagement, and risk management principal processes that are specific to an ephemeral and, nevertheless, complex event environment.

### 2.1.1 Logistics Management

The logistics management belongs to the most important spheres of the festival planning and execution. In the case of The Reading Festival, there are transportation, site preparation, infrastructure, and service provisioning factors.

- **Transportation and site access:** The organizers of festivals have route transport, parking space and other means of transport that are used to control the flow of crowds (IN THE ROUND, 2025). Hundreds of coaches and private cars come in and out, so to reduce the time spent on queues and traffic jams, it is necessary to make the ingress and egress as smooth as possible.
- **Temporary infrastructure:** Setting up temporary stages, hospital units, catering and sanitation tents and camps are part and parcel of being festival ready. Infrastructure should be placed in such a way that it helps with safety (e.g. emergency exits), comfort (sufficient toilets, shower cabins), functionality (sufficient power supply, good areas). In every infrastructure system, planning is a must in terms of setting up, testing, and unsettling the infrastructure.
- **Accommodation logistics:** The festival offers camping services, luxurious accommodation services, and performers and key personnel provisions. Such arrangements hold the coordination with suppliers and the enforcement of rules of the sites to make sure they are safe and comfortable.
- The connection between operations and strategic planning is carried out during logistics planning, where all moving components are synchronized with the project schedule (Giusti *et al.*, 2018). The multi-layered coordination is multi-layered among vendors, staff, contractors and local services which is essential to effective management.

### 2.1.2 Stakeholder Engagement

Festivals require stakeholder engagement in which the expectations of the various interest groups need to be aligned to achieve success. The stakeholder theory states that the goals of a festival should be balanced and unified to fulfil common results of the interests of different stakeholders.

The important stakeholder groups in Reading Festival are:

- **Artists and performers:** Need to be well informed of technical specifications, performance times, hospitality and safety.
- **Sponsors:** Participate in brand awareness, promotions, and business provisions that shape the cost of the festivals and provide.
- **Local Emergency Services and Authorities:** This is the collaboration of licensing, crowd safety, and fire control and regulatory compliance.
- **Attendees:** Contribute money through buying the tickets and create the environment of the festival through the attendance behaviour.
- **Local Community:** This category covers residents and other businesses whose lives could be impacted by the activities of the festivals in their daily lives.

To communicate with these groups, it is necessary to use individual communication tactics, regularly update, and formalize a platform to conduct a discussion, like planning committees and stakeholder meetings (Koilkonda Reddy, 2023).

The stakeholder engagement will contribute to the support but also to finding possible problems in the early stages to increase the preparedness and project success. As an illustration, ongoing interaction with the local authorities will keep licensing and venue regulations up to standard, whereas active communication with sponsors will keep finances and promotion in line.

### 2.1.3 Risk Management

Risk management involves the identification, evaluation, and management of risks that may have negative impacts on the outcomes of a project. Reading Festival has its own risks in the high number of people involved, the large number of people in motion, weather, environmental effects, and safety of people.

The risk processes are usually pre-event risk assessment, real time monitoring and post-event evaluation to guide the future strategies. The new risk management models also focus on the consistent evaluation of risks at all stages of the event life cycle, not limited to pre-event planning, in order to reduce foreseeable and unexpected threats.

Examples of the major risk categories are:

- **Risks of safety and security:** It may result in the crowd crush, harassment, theft, or violence due to large crowds. These incidents are alleviated by proactive security, patrols, restricted points of entry, and working together with the police services.
- **Environmental risks:** Wastes, carbon emissions, and degradation of the site are usual issues. The campaigns of Reading Festival, including its Planet Pledge, promote sustainable activities like recycling waste and reducing the use of plastic materials and low-carbon transportation (Larasti Kenyo, 2023).
- **Logistical risks:** Problems with infrastructure, transport delays or unmet expectations of supplies must be covered with contingency planning and dynamic response options.

A strong risk management protocol contributes to the fact that the situation is more resilient and it can be assumed that the stakeholders will feel confident that the festival is safe and sustainable.

## 2.2 Success Factors

The Reading Festival has remained successful due to a number of reasons:

### 2.2.1 Comprehensive Planning

The complex planning will help in effective scheduling, resource allocation and coordination of the festival elements. Detailed planning models encompass work breakdown structures (WBS) and timelines with milestones and alignment of workforce plans and logistics and operational plans.

Proper assigning of resources as is the case with strategic allocation of resources ensures that vital areas like security services, medical facilities and infrastructure establishment are given due attention and thus the event days are not subjected to too much bottlenecks (Martins, 2026).

### 2.2.2 Stakeholder Collaboration

Good relationships with stakeholders will lead to alignment of expectations, provision of support and reduction of resource issues. The sponsors offer fundamental financial support; artists get proper publicity and logistical assistance and local authorities issue permits and safety measures (Actalliance, 2025).

The stakeholder collaboration is also applied to community engagement, which assists in decreasing the backlash of the population and supporting the economic activity in the area.

### 2.2.3 Adaptability

The conditions surrounding festivals are volatile and can be disturbed by the negative weather condition or technical issues. Flexibility of the plans is made possible by agile responsiveness, which helps festival teams to make quick adjustments. Indicatively, in rainy weather arrangements of schedules, shelters or materials used in the site might have to be made to ensure the comfort and safety of the attendees. The use of Agile methodologies enables teams to react to arising challenges in an iterative manner, which is a crucial aspect in complex event settings.

## 2.3 Challenges and Risks

Although planning is highly practiced, there are still a number of challenges that exist:

### 2.3.1 Environmental Impact

Big events may result in a lot of waste and carbon emission. Some of the proactive steps that Reading Festival has undertaken include encouraging recycling points and using 100 percent fossil-free HVO energy to power the event lighting with the aim of reducing carbon emissions by a significant margin, by 2030 (Charter, 2026).

Environmental issues such as landfill waste, transportation pollution, and degradation of campsites are ongoing and the sustainability practices in them must be enhanced continuously.

### 2.3.2 Safety Concerns

Effective crowd control, dealing with problems of harassment, and the availability of medical assistance remain safety requirements. The festival deploys zero-tolerance policy to harassment and goes ahead to train personnel to uphold the safety measures.

Safety risks can also be addressed by ensuring that the people in charge of security are fully trained and that there is enhancement of the crowd monitoring technologies.

### 2.3.3 Logistical Complexities

It is hard to coordinate thousands of attendees of the festival, vendors, and performers in a limited timeframe. The transportation management, installation of infrastructure, and real-time solving of issues need the accurate synchronization and contingency planning of the sudden disruptions.

## 2.4 Project Management Methodologies

### 2.4.1 PRINCE2

PRINCE2 (Projects IN Controlled Environments) is focused on systematic planning, roles, and administration structures. It supports:

- Well defined stage boundaries and checkpoints,
- Variable duties and responsibility lines, and
- Structured risk and issues reporting.

In the case of Reading Festival, PRINCE2 can be used to put the governance structures in place, which is to standardise the process of task allocation and tracking, particularly the logistics and compliance functions.

### 2.4.2 Agile Methodologies

Agile approaches have iterative planning, flexibility and speedy responsiveness. The Agile principles applied to the event context assist the festival teams to cope with the changing situations, be it the weather conditions, vendor switching, or the deliberate alteration of the schedule during the last minute (Balaban and Đurašković, 2021). Agile enables the teams not to destroy fundamental goals by means of altering scope and priorities. The best way to become more resilient and responsive is to implement a hybrid model of PRINCE2 governance rigor and the Agile flexibility.

## 3. Stakeholder Analysis

The stakeholder analysis plays a major role in comprehending the roles and relationship in a project. In the case of the Reading festival, there are numerous stakeholders who will be involved with varying levels of influence and interest towards whether the event will be successful or not. The recognition and familiarity of these stakeholders will make sure that the project management strategy of the festival is aligned to their needs, expectations and the possible effects on the results of the festival (NABOO, 2026). The identification of stakeholders will be done by classifying them into three categories: internal, external, and regulatory.

### **Internal Stakeholders:**

The management of Festival Republic is in charge of the event as a whole. They have a responsibility of project leadership, budgeting and negotiating with sponsors. They have a major sway on every part of the festival planning, implementation and review of the post event.

Day-to-day operations cannot be done with project staff and volunteers. They help in making logistical plans, crowd control and communicating with the attendees. Volunteers usually have the major roles in safety management, activities of the event and to make sure that all of the activities are properly handled.

### **External Stakeholders:**

Entertainment value of the festival is achieved through artists. Their performances have direct impacts on the sales of tickets, the interest of the audience, and the satisfaction in general. The successful artists are able to draw more people and favorable publicity, and satisfaction among them is one of the main factors in planning. The festival has the required financial support and brand recognition by sponsors. They are not only involved in funding but also significant in the marketing and promotion activities, which guarantee the financial success and reputation of the event (EVM.Institute, 2024).

Local authorities and emergency services take care of legal regulations and safety standards of the festival. They deal with the crowd control, health and safety issues, and the emergency response co-ordination in case of need. The event attendees are the real consumers of the event where they largely influence the success of the festival. Their satisfaction of logistics, safety, entertainment and overall experience will determine whether the event will have met its success measures which include profitability and reputation.

The festival has different impacts on the local businesses and residents, such as in the economic terms of the invaders and the inconveniences related to the traffic or noise. They need to be involved and assist in securing good rapport with the local community.

### **3.1 Power-Interest Matrix**

When doing stakeholder analysis, it is considered convenient to distinguish between stakeholders according to the level of power and interest. Power-Interest Matrix would assist in prioritizing the engagement strategies:

<b>Stakeholder Group</b>	<b>Power</b>	<b>Interest</b>	<b>Rationale</b>
Festival Republic management	High	High	Ultimate decision makers with project control.
Sponsors	High	High	Provide funding and influence branding decisions.
Local Authorities	High	Medium	Influence compliance and safety outcomes.
Artists	Medium	High	Influence attendee satisfaction and event reputation.
Attendees	Low	High	Their experience determines festival success metrics.
Local businesses and residents	Low	Medium	Affected by festival impacts and economic activity.

High-power, high-interest stakeholders, like the management of Festival Republic and large sponsors, need a constant engagement and a conversation to remain in line with the objectives of the festival. Conversely, the high interest but low power stakeholders such as the attendees have well-functioning feedback systems and receptive customer service to enhance their experience. This will make the festival be in a position to control expectations, respond to concerns and maximize overall satisfaction.

The knowledge of the power and interest level of each stakeholder will allow the management of the festival to come up with specific engagement approaches that will reach out to the particular needs and input of each group (Wallace and Michopoulou, 2021). This will assist in building good relationships, and the chances of occurring conflicts during planning and implementation process of the festival will be minimized.

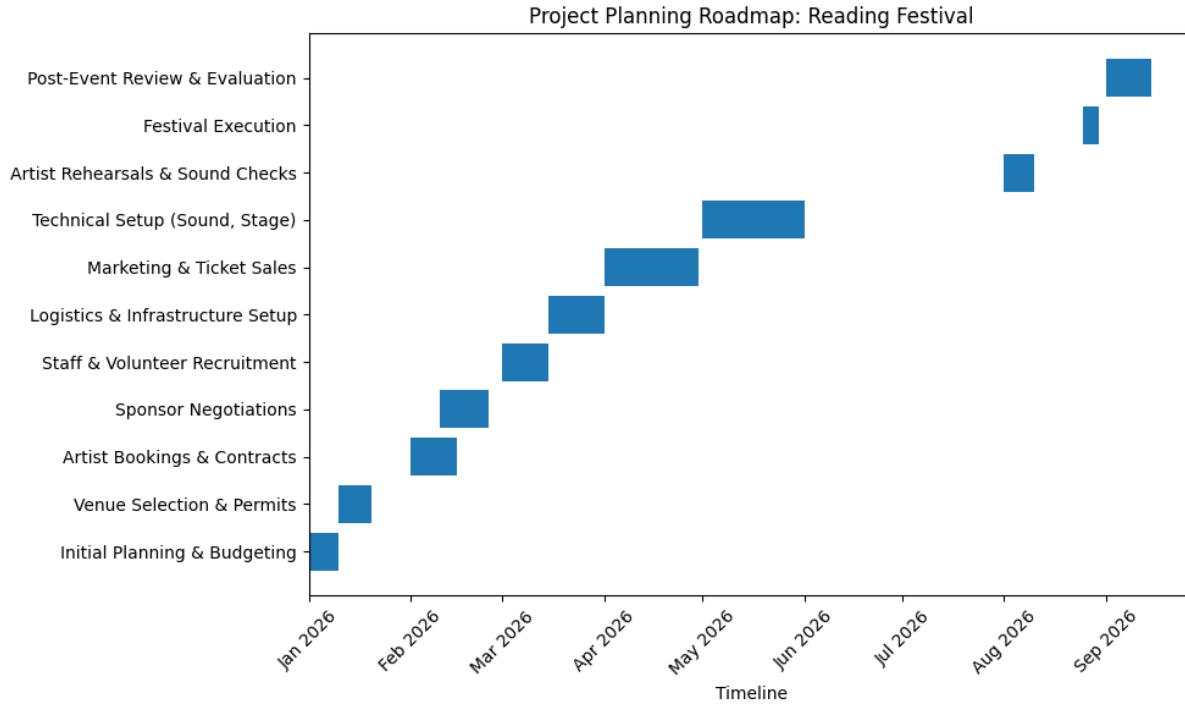
## 4. Risk Management

### 4.1 Risk Register

<b>Risk Category</b>	<b>Likelihood</b>	<b>Impact</b>	<b>Mitigation Strategy</b>
Severe weather	High	High	Develop robust contingency plans, provide covered areas and real-time weather monitoring.
Health and safety incidents	Medium	High	Enhance medical facilities, training, crowd control measures and emergency response.
Environmental degradation	Medium	Medium	Promote sustainable travel, recycling, and waste management, and enforce eco-pledges.
Logistical supply failures	Low	High	Conduct supplier risk assessments, contingency stock, and backup plans.
Negative publicity	Medium	Medium	Implement crisis communication plans and proactive public engagement.

The use of an elaborate risk register will help the project teams to rank risk responses in terms of probability and impact. Risk workshops before the event, ongoing surveillance and post-event analysis also augur better organisational preparedness to recurrent and unpredictable risks.

## 4.2 Project Planning Roadmap



*Figure 1: Project Planning Roadmap for the Reading Festival: Key Milestones and Task Timeline*

This Gantt chart is a project planning road map of the Reading festival and it highlights the main activities that are included in the festival and the timeline of these activities. The timeline of the project is between January 2026 and September 2026 in which several important activities such as budgeting, venue selection, artist booking, and logistics arrangement are allocated in different months. Such a visual aid will keep track of the advancement of every task and makes sure that the organization of the event is in line with the general schedule of the festival.

## 5. Conclusion

The project management framework used in the Reading Festival shows that there is a strict combination of systematic planning, involvement of stakeholders, and risk management procedures. Its triumph is defined by an effective logistics planning, a mutual relationship between the stakeholders, and supply-reactive risk management procedures. Although such issues like environmental impact and safety concerns may not be eliminated completely, such issues are

proactively tackled with such programs as sustainability commitments and zero-tolerance safety measures.

Both conventional and adaptable project management systems like PRINCE2, Agile practices are applied to control the operations and retain flexibility in the response to dynamic event conditions. The concerted attention to the collaboration with stakeholders and sustainability reinforces the reputation of the festival and leads to the success of its operations in the long term.

In general, the Reading Festival is a good example of the event project management balancing the complexity of operations with the expectations of the stakeholders and the risk preparedness.

## 6. Recommendations

To enhance the performance and sustainability even further, the following recommendations are suggested:

The company adheres to all required local and international sustainability and environmental rules to achieve sustainable growth and development.

### 6.1 Sustainability and Environmental Practices

The company complies with the necessary local and international sustainability and environmental regulations to attain sustainable growth and development.

- **Increase waste minimization efforts:** Develop on-site recycling systems and collaborate with organisations to compost and use reusable packaging systems. Encourage Car - pooling or Shuttle services to minimize carbon emissions (TERRAFORMA SYSTEM, 2024).
- **Carbon offset schemes:** Co-operate with environmental agencies in order to offset the emissions that accompany the travel of the attendants.

### 6.2 Improvements in Safety measures.

- **High technology surveillance:** Implement crowd density sensors and AI based surveillance to detect any suspected safety issues on time (Rahane, 2024).
- **Specific training:** This includes extensive safety training of volunteers and employees on crowd management and emergency management.

### 6.3 Stakeholder Communication

- Online interaction platforms: Use mobile applications and web dashboards, to update the participants, volunteers, and partners in real-time.
- Feedback mechanisms: Before, during and after the event, there should be systematic feedback mechanisms in place to institute the inputs of stakeholders in planning cycles (MeetingPulse, 2026).

### 6.4 Technology Integration

- Project management tools: Implement tools, like Microsoft Project or festival-specific ones to control the schedules, assignments of tasks, and risk logs (Schwartz, 2025).
- Data analytics: With the help of analytics, derive insights based on ticketing, logistics and attendee feedback to create future events.
- The recommendations are expected to enhance the sustainability and the experiences of the stakeholders, as well as operational efficiency in order to guarantee the success of the festival in the future.

## 7. References

- Actalliance (2025) “Guidance Note Rapid Response Fund,” *A* [Preprint]. Available at: <https://actalliance.org/wp-content/uploads/2025/06/Rapid-Response-Fund-Guidance.pdf> (Accessed: February 10, 2026).
- Balaban, S. and Đurašković, J. (2021) “Agile Project Management as an Answer to Changing Environment,” *European Project Management Journal*, 11(1), pp. 12–19. Available at: <https://doi.org/10.18485/epmj.2021.11.1.2>.
- Charter (2026) *Reading Festival | Charter*. Available at: <https://www.readingfestival.com/charter> (Accessed: February 10, 2026).
- EVM.Institute (2024) *The Role of Sponsorship in Event Success and Funding* . Available at: <https://evm.institute/event-financing-and-accounting/sponsorship-event-success-funding/> (Accessed: February 10, 2026).
- Giusti, R. *et al.* (2018) “A New Open-source System for Strategic Freight Logistics Planning: The SYNCHRO-NET Optimization Tools,” *Transportation Research Procedia*, 30, pp. 245–254. Available at: <https://doi.org/10.1016/j.trpro.2018.09.027>.
- IN THE ROUND (2025) *Managing festival goers sustainable travel experience: The ultimate guide*. Available at: <https://www.intheround.global/ultimate-guide-to-managing-festival-goers-sustainable-travel-experience> (Accessed: February 10, 2026).
- Koilakonda Reddy, R. (2023) (PDF) *EFFECTIVE COMMUNICATION STRATEGIES FOR STAKEHOLDER ENGAGEMENT*. Available at: [https://www.researchgate.net/publication/385319028\\_EFFECTIVE\\_COMMUNICATION\\_STRATEGIES\\_FOR\\_STAKEHOLDER\\_ENGAGEMENT](https://www.researchgate.net/publication/385319028_EFFECTIVE_COMMUNICATION_STRATEGIES_FOR_STAKEHOLDER_ENGAGEMENT) (Accessed: February 10, 2026).
- Larasti Kenyo, A. (2023) *Managing Carbon Footprint at Music Festivals: A Study at Glastonbury Festival*. Available at: [https://www.researchgate.net/publication/375760099\\_Managing\\_Carbon\\_Footprint\\_at\\_Music\\_F](https://www.researchgate.net/publication/375760099_Managing_Carbon_Footprint_at_Music_F)

estivals\_A\_Study\_at\_Glastonbury\_Festival (Accessed: February 10, 2026).

Martins, J. (2026) *What Is Resource Allocation? Learn how to Allocate Resources* . Available at: <https://asana.com/resources/resource-allocation> (Accessed: February 10, 2026).

MeetingPulse (2026) *Collecting Feedback Before, During, After Meetings* | MeetingPulse. Available at: <https://meetingpulse.net/blog/3-critical-stages-of-live-event-feedback/#:~:text=Involving participants before%2C during%2C and,thus deliver a better experience.> (Accessed: February 10, 2026).

NABOO (2026) *All the latest news on team retreats and corporate seminars* | Naboo. Available at: <https://www.naboo.app/en-gb/blog> (Accessed: February 10, 2026).

Rahane, S.A. (2024) “AI-Driven Crowd Surveillance for Real-Time Threat Detection in Urban Security,” 12(5), pp. 2349–7300. Available at: <https://www.ijrmps.org/papers/2024/5/231429.pdf> (Accessed: February 10, 2026).

Schwartz, B. (2025) *10 Top Microsoft Project Management Software, Apps & Tools*. Available at: <https://www.projectmanager.com/blog/microsoft-project-management-tools> (Accessed: February 10, 2026).

TERRAFORMA SYSTEM (2024) *Why Companies Are Switching to On-Site Composting*. Available at: <https://www.terraformasystems.com/post-1/why-companies-are-switching-to-on-site-composting#:~:text=On-site composting also enhances,Soil Health and Odor Management> (Accessed: February 10, 2026).

Wallace, K. and Michopoulou, E. (2021) “STAKEHOLDER REQUIREMENTS AND VALUE COCREATION IN EVENTS,” *Event Management*, 27(2), pp. 281–299. Available at: <https://doi.org/10.3727/152599521X16367300695744>.

